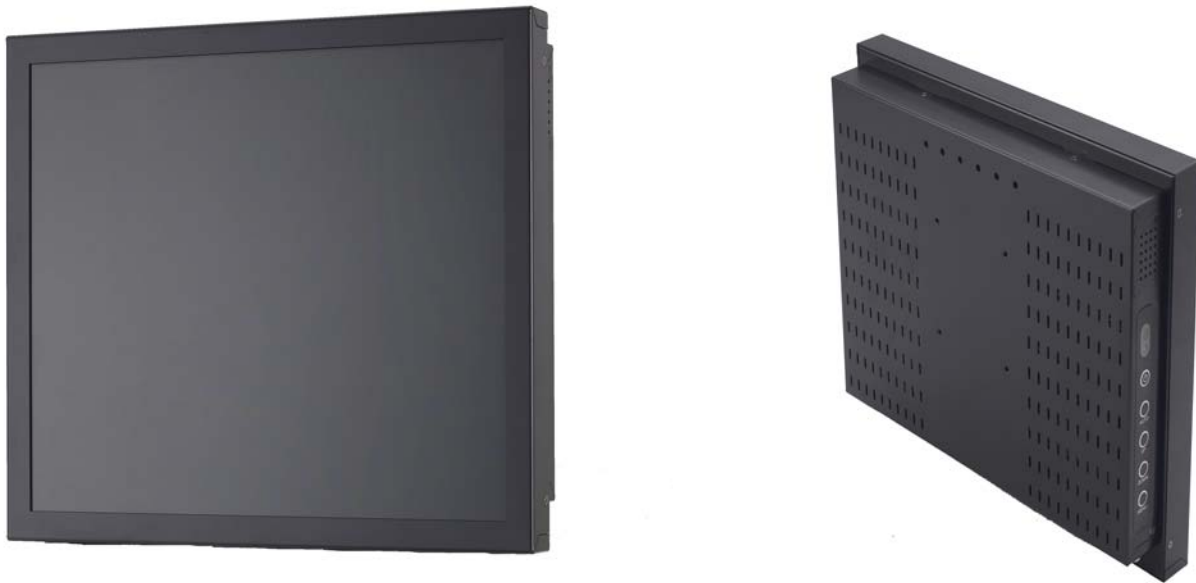


Industrial Monitor



The Chassis Monitor Kits Series has been uniquely designed to satisfy the needs of System Integrators / VARs and Oems / End Users alike. VERTEX has achieved this lofty goal by designing the Chassis Monitor Kits with elegant Simplicity, modular adaptability. In a sleek metal housing, giving it a custom designed look. It is excellent for any space-constricted application within a variety of different environments.



The Chassis Monitor lightweight enclosure has been optimized to reduce cost, protect the monitor's electronics and facilitate a variety of mounting schemes. This inherent flexibility permits Integrators and VARs to quickly and easily design and manufacture their end-products around our fully functional, display module.

Our low power devices are designed to operate from single +12V regulated sources that can be supplied by the customer, or may be purchased directly from VERTEX. Additionally, the Chassis Monitor is designed with the intent to meet FCC and UL Certification.

The Chassis Monitor is configured to support NTSC, SECAM, PAL and RS-170 video in composite video or S-video format. The response time of the active matrix TFT makes it the ideal platform for live video input.





Specifications

Long life design for OEMs and projects

Low power consumption saves energy

Optional S-Video/Composite inputs for AV Applications

Optional protective Glass for common area applications

Designed for TouchScreen integration

Panel	Cell Type Aspect Ratio / Size Glass Surface Pixel numbers / Colors Pixel Pitch Active Area Light Source Brignthess / Contrast Viewing Angle Response Time	Color active matrix TFT (Thin-Film-Transistor) LCD panel 4 : 3 / 19" viewable diagonal area Black Anti-Glare, low reflection coating 1280(H) x 1024(V) / 16.7 Million 0.294(H) x 0.294(V) mm 376.3(H) x 301.1(V) mm Long life, 50,000 hrs (typ) 420 cd/m ² (typ) , 1000 : 1 Horizontal 170° (typ) (- 85° ~ + 85°) Vertical 170° (typ) (-85° ~ + 85°) ≤ 8 ms	
Input Sources	PC System Audio System	Signal Sync Frequency Resolution Recommended Stereo Amplifier 2W x 2	Analog RGB (0.7/1.0 V _{p-p} , 75 ohms) Composite Sync, Separate Sync, Sync On Green F _h : 30 - 82Khz , F _v : 50 -75Hz 1280 x 1024@60/70/75 Hz 1024 x 768@60/70/75 Hz 800 x 600@60/70/75 Hz 640 x 480@60 / 70 / 75 Hz 720 x 400@60 / 70 Hz 1280 x 1024@60 Hz
Input Terminals	PC Signal PC Audio Power Plug	15 Pin Female D-Sub x 1 Stereo Headphone Jack x 1 12VDC Jack	
Control Convenient Features	Front Panel (5 Keys) Auto Calibration Back Light Adjustment OSD Menu Wall Mount Ready	Men/Select , Auto , Up , Down , Power Multi-Languages VESA 75 X 75(mm)	
Power power Rating (Support DPMS)	Input Voltage - Operation - Stand-By - Off	Universal / Auto-Sensing, 90 to 260VAC, 50 / 60 Hz 32 watt < 5 watt < 5 watt	
Operating Condition	Temperature Humidity	0°C - 40°C (32°F - 104°F) 10% - 90% (no condensation)	
Storage Condition	Temperature Humidity	- 20°C - 60°C (- 4°F - 140°F) 10% - 90% (no condensation)	
Dimensions	Physical Carton	With Base(W x H x D) : TBD Without Base(W x H x D) : 401.00 x 328.60 x 63.00 (mm) W x H x D = TBD	
Weight	N.W . / G.W .	3.5 Kgs / 4.5 Kgs	
Optional	SV + AV Touch Screen PC Mainboard Speaker Protect Glass	Screen Protected , Double coating	
Certification		FCC , CE	
Container Loaded	20ft / 40ft / 40ft HQ	TBD (Sets , By pallet)	

Industrial Monitor

